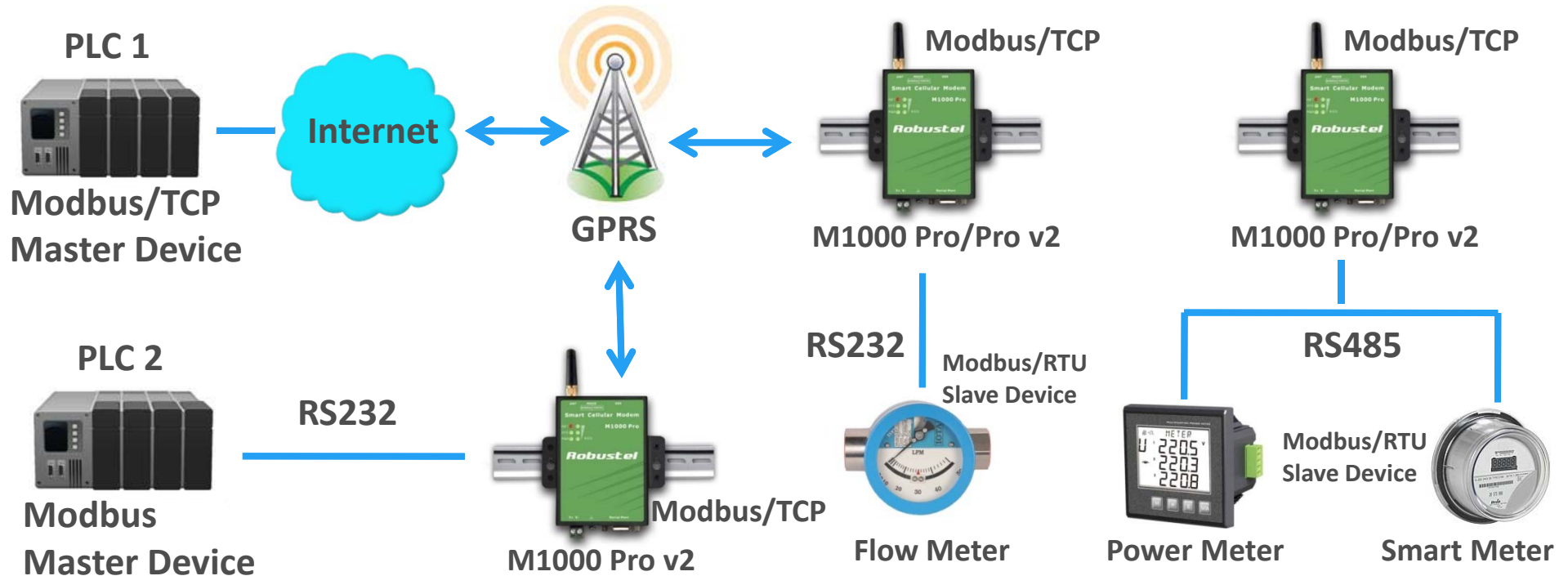


Modbus/RTU to Modbus/TCP via GPRS



Scenario A:

The PLC 1 supports Modbus/TCP protocol, and the remote site supports Modbus/RTU protocol.

M1000 Pro/Pro v2 works as Modbus/RTU to Modbus/TCP Gateway, connecting to Modbus RTU slave devices, using GPRS for data transmission with fixed public IP(or domain name)/private IP; PLC1 supports Modbus/TCP, with any kind of IP/private IP from the same private network.

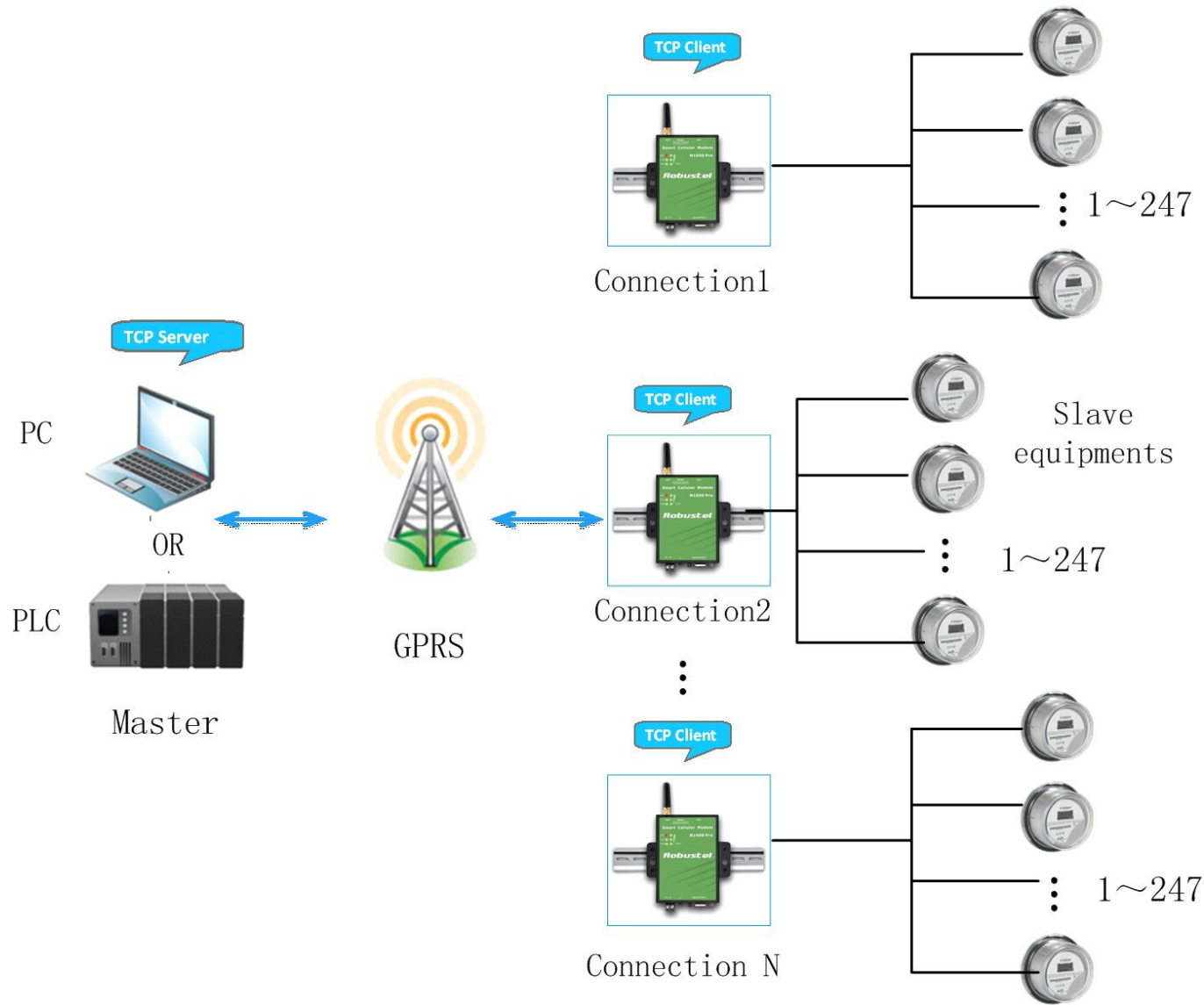
Scenario B:

The PLC 2 and the remote site support Modbus/RTU protocol.

M1000 Pro/Pro v2 which connect to PLC 2 via RS232 works as Modbus/RTU to Modbus/TCP Gateway, and under Master mode.

It use GPRS for data transmission with any kind of IP;

The remote M1000 Pro/Pro v2 works as Modbus/RTU to Modbus/TCP Gateway, connecting to Modbus RTU slave devices, using GPRS for data transmission with fixed public IP(or domain name)/private IP from the same private network.



GoRugged Dual SIM Industrial Serial to Cellular Gateway

GoRugged M1000 Pro V2 **NEW**



- Dual SIM redundancy for continuous cellular connections.
- Auto GPRS connect/reconnect (no AT commands required), watchdog for reliable communications.
- GPRS with backup to CSD.
- Transparent TCP and UDP socket connections.
- Supports Virtual COM (COM port redirector).
- Supports ICMP, DDNS.
- Supports Modbus/RTU to Modbus/TCP.
- Auto reboot via SMS/Caller ID or during a preset time of a day.
- Various dial-up policies, such as always online, auto disconnect GPRS when idle, wakeup by serial data, SMS, Caller ID, during a preset time of a day or periodically at preset interval.
- Auto SMS of IP for dynamic IP SIM Card.
- Packetization methods: packet length / time interval / special end characters.
- Remote configuration via SMS.
- Firmware upgrade via serial interface.
- RS232/RS485 selectable by software, additional one digital input and one digital output.
- Six LED indicators provide signal strength (RSSI) and status.
- Wide range input voltages from 9 to 36 VDC and wide range operating temperature: -25 to 70 ° C.
- The metal enclosure can be mounted on a DIN-rail or on the wall, also with extra ground screw.